

KD-Validated Anti-ALDOA Rabbit Monoclonal Antibody
Rabbit monoclonal antibody
Catalog # AGI1849**Specification****KD-Validated Anti-ALDOA Rabbit Monoclonal Antibody - Product Information**

Application	WB
Primary Accession	P04075
Reactivity	Rat, Human, Mouse
Clonality	Monoclonal
Isotype	Rabbit IgG
Calculated MW	Predicted, 39 kDa, observed, 36 kDa kDa
Gene Name	ALDOA
Aliases	ALDOA; Aldolase, Fructose-Bisphosphate A; Aldolase A, Fructose-Bisphosphate; Fructose-Bisphosphate Aldolase A; Lung Cancer Antigen NY-LU-1; Muscle-Type Aldolase; EC 4.1.2.13; ALDA; Epididymis Secretory Sperm Binding Protein Li 87p; Fructose-1,6-Bisphosphate Triosephosphate-Lyase; HEL-S-87p; GSD12 A synthesized peptide derived from human Aldolase
Immunogen	

KD-Validated Anti-ALDOA Rabbit Monoclonal Antibody - Additional Information

Gene ID	226
Other Names	
Fructose-bisphosphate aldolase A, 4.1.2.13, Lung cancer antigen NY-LU-1, Muscle-type aldolase, ALDOA (http://www.genenames.org/cgi-bin/gene_symbol_report?hgnc_id=414), ALDA	

KD-Validated Anti-ALDOA Rabbit Monoclonal Antibody - Protein Information**Name** ALDOA ([HGNC:414](#))**Synonyms** ALDA**Function**

Catalyzes the reversible conversion of beta-D-fructose 1,6- bisphosphate (FBP) into two triose phosphate and plays a key role in glycolysis and gluconeogenesis (PubMed:<http://www.uniprot.org/citations/14766013>). In addition, may also function as scaffolding protein (By similarity).

Cellular Location

Cytoplasm, myofibril, sarcomere, I band {ECO:0000250|UniProtKB:P00883}. Cytoplasm, myofibril, sarcomere, M line {ECO:0000250|UniProtKB:P00883}. Note=In skeletal muscle, accumulates around the M line and within the I band, colocalizing with FBP2 on both sides of the Z line in the

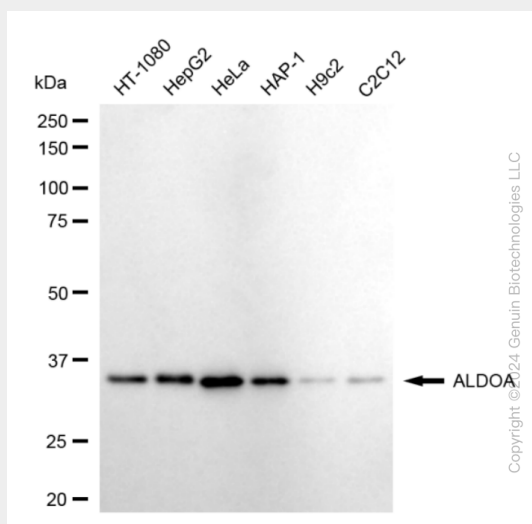
absence of Ca(2+) {ECO:0000250|UniProtKB:P00883}

KD-Validated Anti-ALDOA Rabbit Monoclonal Antibody - Protocols

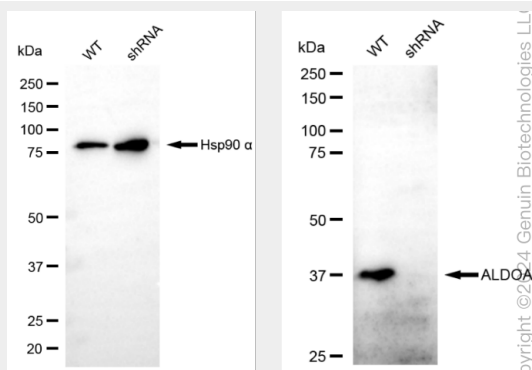
Provided below are standard protocols that you may find useful for product applications.

- [Western Blot](#)
- [Blocking Peptides](#)
- [Dot Blot](#)
- [Immunohistochemistry](#)
- [Immunofluorescence](#)
- [Immunoprecipitation](#)
- [Flow Cytometry](#)
- [Cell Culture](#)

KD-Validated Anti-ALDOA Rabbit Monoclonal Antibody - Images



Western blotting analysis using anti-ALDOA antibody (Cat#AGI1849). Total cell lysates (30 µg) from various cell lines were loaded and separated by SDS-PAGE. The blot was incubated with anti-ALDOA antibody (Cat#AGI1849, 1:5,000) and HRP-conjugated goat anti-rabbit secondary antibody respectively.



Western blotting analysis using anti-ALDOA antibody (Cat#AGI1849). ALDOA expression in wild-type (WT) and ALDOA shRNA knockdown (KD) HeLa cells with 20 µg of total cell lysates. Hsp90 α serves as a loading control. The blot was incubated with anti-ALDOA antibody.

(Cat#AGI1849, 1:5,000) and HRP-conjugated goat anti-rabbit secondary antibody respectively.